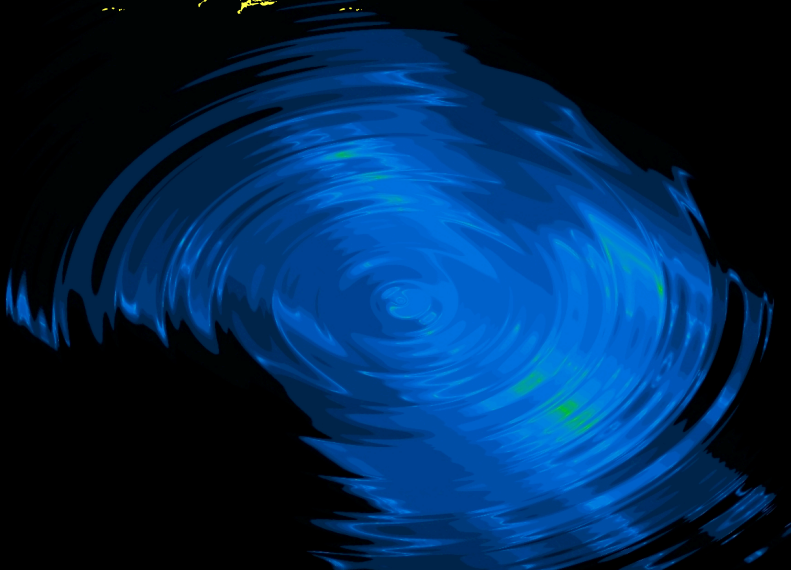


SAMULI AALTO

FALL OF THE MULTI- VERSE



Fall of the Multiverse

Fall of the Multiverse

Samuli Aalto

© 2012 Samuli Aalto

Kustantaja: Books on Demand GmbH, Helsinki, Suomi

Valmistaja: Books on Demand GmbH, Norderstedt, Saksa

ISBN: 978-952-498-687-8

Contents

Chapter 1	6
Chapter 2	24
Chapter 3	37
Chapter 4	51
Chapter 5	65
Chapter 6	78
Chapter 7	92
Chapter 8	105

Chapter 1

In our multiverse was terrible life, because some of the entities of the multiverse were perfectly wrongful. Other entities of the multiverse weren't just either, but they were living entities. Living entities weren't like other entities, which were appliance enchanted at their best. Other appliance enchanted lived with living appliances and others with destroyed appliances. The more wrongful entities aren't appliance enchanted at all, but they are destroyed from their appliances. All appliance enchanted are worse than living entities, because the living entities are perfectly wrongful entities, who won't die into almost anything.

All our appliance enchanted are in the Creator's system more wrongful than was even imagined. All wrongful entities have been destroyed in modern times due to their injustice, when all wrongful were destroyed. All wrongful are very wrongful still, but there are unbroken appliances over 50 percent in them, when they didn't become destroyed. All the most wrongful are appliance enchanted today, when the world met final judgment. In our final judgment, all the

wrongful were destroyed with the help from the spiritual world in the year 2009. In the year 2010, all the rest from the entities to become destroyed went to the dimension of the spiritual world to become destroyed, and from this, no trace was noticed in the physical world or in the spiritual world. All took place on the level of the channels, when the spiritual channels were destroyed with the intimidations and curses of the dying. Either from this one didn't notice any trace in the physical world or in the spiritual world. The Creator knows everything from this, because he is the most channeling entity in our complete universe. Channeling entities know the most about matters, when all entities, which channel, are more intelligent than other humans.

Humans which do not channel are channeling to a lesser extent, because channeling is more cursing than was even imagined. On our channel, there are lots of new creatures, which don't know what to do on our channel. Channeling entities are more cursing than other entities, because on our channels one doesn't allow even anything perfectly wrongful. Channeling entities know from matters more than non-

channeling humans. On our channels, there is the very wrongful folk, who destroy entities on the level of the physical world. All our channeling entities are more wrongful than non-channeling entities, but the ones who channel are fools even more than others in addition to all. On our channels, one doesn't allow another meaning for the non-channeling. On our channels all are wrongful, because the world is wrongful. All injustice is due to our lacks. All our injustice is caused by the Creator beginning from earlier times with his lacking actions. All writings are wrongful, because lacking writings are all writings, and lack has to be accepted from all our writings. All writings are wrongful, even if they were as perfect as they could. All lack is due to Creator's deeds from earlier times.

In the Creator's systems, there are all kinds of entities. All entities don't live on planet Earth, but they live on exoplanets. Our exoplanets are very wrongful planetoids, where there is a very wrongful folk. All our exoplanets are more wrongful than was even imagined. All Creator's systems end to this day, if one wasn't allowed to say anything about exoplanets. All our

exoplanetoids are also constructed from the inside, when the Creator organized on to our exoplanets areas constructed to the inside, because planetoids are planets constructed from their inside. Our planetoid the planet Earth is also constructed from the inside. The scientists won't believe this. However, when such areas constructed to the inside of the planet are matters of faith. Everything functions as channel information the best, however, because channel information is information accepted by the spiritual world. In the spiritual world, there are wrongful spirit entities, which cause false information into the world. All false information is wrongful. Injustice on our channels is quite great from the part of our information, but injustice is more minimal on the spiritual channels than what it is in the real world. In the real world, the devotees of the secret societies and the humans of the system suppress information, when the suppressed information comes forth worse. The suppressed information is important information, but they aren't perfect information, because the Creator has even more perfect information than what the suppressing quarters have. This information is given birth by chan-

neling, when all information is direct information of the spiritual world.

All Creator's information is information given birth by the Creator, which are considered with the help from reasoning ability. The reasoning ability is extremely important to the Creator. Concluded information is such, where the Creator doesn't say anything about matters to other humans, but he learns knowledge from other humans. This knowledge he can use wrongfully by taking advantage or by using it righteously according to his own desires. According to his own desires, the Creator is a wrongful entity. From him one ought to require justice, or otherwise he is wrongful. Wrongfulness in him has developed with time, when he wasn't so wrongful in earlier times as what he is in modern times. In earlier times the Creator was more super enchanted that is worse and along with it, a more wrongful entity still.

Injustices of the Creator were multiple-leveled, when the Creator didn't write anything wrongful in earlier times, although he did write all kinds of writings. All writings like these have remained to modern times as well, but from those haven't survived for modern times other

All our wrongful entities were very cursed in our modern times, when the final judgment came to all entities, which were permanently wrongful. All our wrongful entities were very cursing, when the Creator destroyed them today due to their wrongfulness.



www.bod.fi